



New Avenues to New Audiences

Annual Report 2016

Samuel H. Kress Foundation

KRESS

Cover and Back Images:
Elisabetta Sirani (Italian, 1638–1665)
The Archangel Gabriel, possibly 1662
Samuel H. Kress Collection
Samuel H. Kress Foundation,
New York, NY

Below:
Attributed to Pietro Novelli (Italian, 1603–1647)
Saints Peter and Paul, c. 1620–40
Samuel H. Kress Collection
Sheldon Museum of Art
University of Nebraska–Lincoln, Lincoln, NE



ANNUAL REPORT 2016
Eighty-Seventh Year

Samuel H. Kress Foundation



Attributed to Giuseppe Mazzuoli
(Roman, 1644–1725)
A Nereid, c. 1705/1715
Samuel H. Kress Collection
National Gallery of Art,
Washington, DC



CONTENTS

- 4 President's Message
- 8 Summary of Awards

9 Grants

- 10 Summary of Grants
- 11 History of Art
- 17 Conservation
- 19 Digital Resources for the History of Art
- 22 General Program Support

23 Fellowships

- 24 Summary of Fellowships
- 25 History of Art: Institutional Fellowships
- 28 Conservation Fellowships
- 29 Interpretive Fellowships at Art Museums

31 Financial Review

- 32 Independent Auditor's Report
- 34 Statements of Financial Position
- 35 Statements of Activities
- 36 Statements of Cash Flows
- 37 Notes to Financial Statements

44 Trustees and Staff

- 45 Trustees and Terms of Service



PRESIDENT'S MESSAGE

2016 has been notable for many things. In the microcosm of the Samuel H. Kress Foundation, it is noteworthy primarily for the watershed transition it has witnessed within our organizational culture and governance structure. No fewer than four of the (typically eight-to-nine) members of our Board of Trustees have recently retired, or are poised to retire soon, reflecting our term limits policy. Never have so many of our Trustees cycled off our Board more or less at once, and this singular transition provides an occasion to reflect upon and publicly recognize the selfless contribution our Board of Trustees makes to the mission and the ongoing work of the Kress Foundation.

We would not be Kress, of course, if this moment did not occasion an art historical reflection. And in that spirit, it is intriguing to realize how many significant art historical milestones have occurred in years ending in '16, even in our chosen domain of the pre-modern history of European art. Let one example stand for many: Today the French are celebrating the fact that five hundred years ago, in 1516, Leonardo da Vinci left his Italian homeland for France, entering the service of François I. He was given use of the manor house of Clos Lucé, connected via tunnel to the King's residence, the Château d'Amboise. He is thought to have brought his Mona Lisa with him. With a bit of effort, one could easily construct a history of western art across the centuries, with the year '16 serving as a marker for key artistic farewells and migrations.

As the year 2016 demonstrates, the Kress Foundation itself is no exception. Over the course of the long history of our Foundation (established in 1929), nearly fifty distinguished individuals have served on our Board of Trustees.¹ Recently three remarkable individuals have joined the numbers of our Trustees Emeriti/ae. They include Cheryl Hurley, President of the Library of America (retired fall 2015); David Rumsey, map collector and pioneering digital innovator (retired fall 2016); and Barbara A. Shailor, an outstanding scholar and digital humanist (retired

¹ For a comprehensive list of our forty-seven past Trustees, and our four past Presidents, see page 45 and http://www.kressfoundation.org/about/past_presidents_and_trustees/.

Peter Paul Rubens (Flemish, 1577–1640)
Workshop of Philippe Maëcht & Hans Taye
Comans-La Planche Tapestry Factory, Paris
Constantine Directing the Building of Constantinople
1623–1625, Samuel H. Kress Collection
Philadelphia Museum of Art, Philadelphia, PA



fall 2016). And in the fall of 2017, our esteemed chairman, Frederick W. Beinecke, will join the distinguished roster of former Kress Trustees. All four have made abiding contributions to the work of the Foundation by generously sharing their wisdom and expertise, and they have enriched the lives of our staff and Trustees alike by virtue of their friendship and collegiality.

For a Board to lose nearly half its Trustees in the short span of two years is significant, and that is why we regard 2016 as a watershed in our

organizational history. While we are entirely confident that our Board will replenish its membership wisely, we do wish to take this occasion to reflect briefly upon the role and contributions of a private foundation's Board of Trustees, and that of our own in particular.

Private foundation boards, as we know, have direct responsibility for governance, for financial prudence, for legal compliance, and for a host of other essential duties. But perhaps—and in the case of the Kress Foundation, certainly—the Board's greatest contribution is the corporate wisdom it embodies and the guidance its members generously provide in the execution of a foundation's mission.

The Kress Foundation's mission is relatively specialized: "Our mission at the Samuel H. Kress Foundation... is to sustain and carry out the original vision of our founder, Samuel H. Kress (1863–1955). We support the work of individuals and institutions engaged with the appreciation, interpretation, preservation, study and teaching of the history of European art and architecture from antiquity to the dawn of the modern era."² While the time span "from antiquity to the dawn of the modern era" is not a trivial one, the fact remains that in an era of emergent "global art history," we still focus on one, very focused dimension of the field. And while our programs embrace the specialist and the public alike, we have long had a central commitment to grooming the next generation of specialists—conservators, curators, educators and scholars.

Interestingly our Trustees have rarely been art historians in this specialized sense. Rather they are typically humanists in the Erasmian mold: deeply embedded in the history of western culture and deeply committed to the intellectual and aesthetic values it embodies. They have, in other words, tended to be "amateurs" in the best sense: highly educated, almost invariably bibliophiles, often collectors—lovers, in that

² See page 47 and <http://www.kressfoundation.org/about/mission/>.

venerable phrase we would do well to revive, of the humane arts and letters. And all have simultaneously brought other forms of expertise (academic, administrative, financial, legal and sometimes art historical) to the task. The result is a distinctive cultural mosaic that, situated strategically at the head of the Foundation, both reflects and sheds light on the Kress Foundation's charitable mission and its grant programs.

The Kress Board of Trustees assembles three times each year, and makes a point of visiting at least one Kress Collection annually. In 2016 we paid a memorable visit to the New Orleans Museum of Art, where we enjoyed the hospitality of Susan Taylor, Director, and her excellent staff. And in recent years we have also enjoyed the opportunity to visit Kress Collections in Atlanta, Birmingham, Honolulu, Kansas City, Lawrence, Raleigh, Ponce, Sarasota and Tucson. These visits testify to and underscore the Kress Foundation's abiding ties and sense of commitment to the former Kress Collection, now distributed across more than forty art museums—and dozens of other institutions—nationwide. They represent an ideal way of introducing new Kress Trustees to our complex mission and we look forward to future visits with our new Trustees.

As the Kress Foundation's current President, I wish to end this brief “message” with a plenary “thank you” to our past, present and future Trustees for all they do to advance the Kress mission!

A handwritten signature in cursive script, reading "Max Marmor".

Max Marmor
President



SUMMARY OF AWARDS

Grants	\$1,891,443
Fellowships	1,866,085
Direct Charitable Activity	19,986
<i>Grand Total Awards</i>	\$3,777,514

Next Page:
Follower of Nicolas Poussin
[Nicolas Poussin (French, 1594–1665)]
The Holy Family on the Steps, 1648
Samuel H. Kress Collection
National Gallery of Art, Washington, DC



GRANTS



SUMMARY OF GRANTS

History of Art	\$ 986,855
Conservation	82,500
Digital Resources for the History of Art	686,715
General Program Support	16,613
Other - Matching Gifts	118,760
<i>Grand Total Grants</i>	<i>\$ 1,891,443</i>



American Academy in Rome NEW YORK, NY	In support of a short-term residential fellowship at the American Academy in Rome for a member of the Association of Art Museum Directors	11,250
American Academy in Rome NEW YORK, NY	In support of a short-term residential fellowship at the American Academy in Rome for a member of the Association of Art Museum Curators	12,250
American Friends of the Victoria & Albert Museum GREENWICH, CT	In support of participation by scholars in the international conference <i>Botticelli Reimagined</i> at the Victoria & Albert Museum, London, UK	8,750
Archaeological Institute of America BOSTON, MA	In support of participation by scholars from abroad in the 117th Annual Meeting of the Archaeological Institute of America in San Francisco, CA	3,000
Archaeological Institute of America BOSTON, MA	In support of Kress Research and Publication Fellowships in Classical Art & Architecture awarded to Michelle Berenfeld and Sanda Heinz	17,000
Archaeological Institute of America BOSTON, MA	Kress Lectureship in Ancient Art awarded to Daniele Maras, Lorenzo Nigro, and Mike Parker Pearson	55,000
Art Libraries Society of North America CALGARY, CANADA	In support of participation by art librarians in international conferences in order to promote the exchange of ideas and information	15,000
ArtTable, Inc. NEW YORK, NY	In support of the 2016 Summer Diversity Internship Program for female graduate students from backgrounds underrepresented in art museum employment, awarded to Alyssa Velazquez, Crystal Ferrer, and Heather Hughes	12,000

Association of Academic Museums and Galleries EUGENE, OR	In support of participation by museum professionals in the 2016 Academic Museum Leadership Seminar at the Center for Nonprofit Management, Northwestern University	25,000
Association of Art Museum Curators Foundation NEW YORK, NY	In support of participation by curators in the 2016 Association of Art Museum Curators Annual Meeting in Houston, TX	11,000
Association of Art Museum Directors Educational Foundation NEW YORK, NY	In support of participation by art museum and research professionals in the Antiquities Provenance Workshop jointly hosted by the AAMD and the Archaeological Institute of America at the Pennsylvania Museum of Archaeology & Anthropology, Philadelphia, PA	14,000
Bowdoin College BRUNSWICK, ME	In support of the exhibition <i>The Ivory Mirror: The Art of Mortality in Renaissance Europe</i> at the Bowdoin College Museum of Art, Brunswick, ME	17,000
Cambridge in America NEW YORK, NY	In support of participation by US scholars in the conference <i>Manuscripts in the Making: Art and Science</i> hosted by the Fitzwilliam Museum and the Departments of Chemistry and History of Art at the University of Cambridge	7,500
City University of New York NEW YORK, NY	In support of participation by art history graduate students in the CUNY intensive summer Latin / Greek Institute	8,000
College Art Association NEW YORK, NY	In support of participation by scholars from abroad in the 2016 College Art Association Annual Conference in Washington, DC	6,000
College Art Association NEW YORK, NY	In support of the redesign of the quarterly journal <i>The Art Bulletin</i>	13,000
College Art Association NEW YORK, NY	In support of participation by US copyright experts, visual arts professionals, publishers, and librarians in a convening on copyright and fair use practices in Europe	15,000

Council of Independent Colleges WASHINGTON, DC	In support of the faculty development project, <i>Sight and Sound in Renaissance and Baroque Europe: A Seminar on Teaching European Art in Context</i> , held at the High Museum of Art, Atlanta, GA in the summer of 2016	120,000
Council on Library and Information Resources WASHINGTON, DC	In support of participation by art museum professionals in the 2016 Digital Library Federation Forum in Milwaukee, WI	8,000
Council on Library and Information Resources WASHINGTON, DC	In one-time support of Digital Library Federation memberships for museums and museum consortia	10,250
Denver Art Museum DENVER, CO	In support of the exhibition <i>Glory of Venice: Masterworks of the Renaissance</i>	50,000
Fairfield University FAIRFIELD, CT	In support of an international symposium held in conjunction with the exhibition <i>The Holy Name. Treasures from the Gesù: Bernini and his Age</i> at the Fairfield University Art Museum	10,000
International Center of Medieval Art NEW YORK, NY	In support of participation by members of the International Center of Medieval Art in international scholarly conferences	10,000
International Center of Medieval Art NEW YORK, NY	In support of Mid-Career Research and Publication Fellowships awarded to Benjamin Anderson, Ivan Drpić, Heidi Gearhart, Melanie Hanan, and Marguerite Keane	16,000
Italian Art Society ATHENS, GA	In support of an annual Italian Art Society / Kress Lecture in Italy	2,800
Italian Art Society ATHENS, GA	In support of participation by members of the Italian Art Society in IAS-sponsored sessions at scholarly conferences	5,000
King Baudouin Foundation NEW YORK, NY	In support of participation by American graduate students in the 2016 <i>Summer Course for the Study of the Arts in Flanders: The Age of Rubens in Context</i>	5,000
Medici Archive Project NEW YORK, NY	In support of participation by scholars from the US in the conference <i>Vasari @ Santa Croce</i> held in Florence, Italy	5,000

Medici Archive Project NEW YORK, NY	In support of short-term research and paleography fellowships for advanced students of Renaissance art history	16,000
Middlebury College MIDDLEBURY, VT	In support of participation by US art history graduate students in intensive summer European language study	55,000
Morgan Library & Museum NEW YORK, NY	In support of educational programming associated with the exhibition <i>Hans Memling: Portraiture, Piety, and a Reunited Altarpiece</i>	6,000
Morgan Library & Museum NEW YORK, NY	In support of pre-doctoral fellowships at the Drawing Institute at the Morgan Library & Museum	20,000
National Art Education Association RESTON, VA	In continued support of a national research study exploring the benefits of art museum visits to students	40,000
National Gallery of Art WASHINGTON, DC	In support of an exploratory meeting to discuss the establishment of a national professional organization for art museum educators	7,800
National Gallery of Art WASHINGTON, DC	In support of the publication <i>A Generous Vision II: Samuel H. Kress Professors 1995–2016</i>	10,000
National Gallery of Art WASHINGTON, DC	In continued support of work to establish an Association of Art Museum Educators	48,000
Newberry Library CHICAGO, IL	In support of a series of seminars focused on European art history	8,500
Renaissance Society of America NEW YORK, NY	In support of participation by art historians from abroad in the 2016 Renaissance Society of America Annual Meeting in Boston, MA	10,000
Renaissance Society of America NEW YORK, NY	In support of Mid-Career Research and Publication Fellowships awarded to Katherine Brown, Dana Katz, Edward Wouk, Allison Levy, and Pieter Martens	17,000

Renaissance Society of America NEW YORK, NY	In support of the Kress Short-Term Research Library Fellowships for Art Historians at Independent Research Libraries awarded to Alexandra Marraccini, Sarah Kyle, Bradley Cavallo, and Elizabeth Merrill	20,500
Society of Architectural Historians CHICAGO, IL	In support of participation by scholars from abroad in the 2016 Society of Architectural Historians Annual Conference in Pasadena / Los Angeles, CA	2,000
Southern Methodist University DALLAS, TX	In continued support of a collaborative loan and fellowship program between the Meadows Museum, Southern Methodist University and the Museo Nacional del Prado, Madrid, Spain	35,000
Syracuse University SYRACUSE, NY	In support of participation by American graduate students in the Syracuse University year-long study abroad program in Florence, Italy	13,000
University of Arizona TUCSON, AZ	In support of a series of initiatives to enhance the interpretation of the Kress Collection at the University of Arizona Museum of Art, Tucson, AZ	9,255
University of California, Los Angeles LOS ANGELES, CA	In support of the Kress / Murphy Scholarships for art historians and art librarians at the California Rare Book School	10,000
University of Miami CORAL GABLES, FL	In support of the long-term loan of late Medieval and Renaissance Spanish objects from the Metropolitan Museum of Art to the Lowe Art Museum, University of Miami, Coral Gables, FL	10,000
University of Miami CORAL GABLES, FL	In support of the inaugural <i>Academic Art Museum and Library Summit</i> hosted by the University of Miami	25,000
University of Oxford OXFORD, UNITED KINGDOM	In support of the participation of North American scholars in the conference <i>Photo Archives VI: The Place of Photography</i> hosted by the University of Oxford in 2017	4,300
University of Texas Foundation AUSTIN, TX	In support of public programs associated with the exhibition <i>Goya: Mad Reason</i> at the Blanton Museum of Art, University of Texas at Austin	3,500
Visual Resources Association Foundation SCHENECTADY, NY	In support of a graduate student internship in Visual Resources and Image Management	4,000

Visual Resources Association Foundation SCHENECTADY, NY	In support of participation by graduate students and professionals in information science, visual resources, and image management in the 2016 <i>Summer Education Institute for Image Management</i> , co-sponsored by the Art Libraries Society of North America (ARLIS/NA)	5,000
Visual Resources Association Foundation SCHENECTADY, NY	In support of the Visual Resources Association's <i>Regional Workshop Program</i>	6,000
Warburg Institute, University of London LONDON, UNITED KINGDOM	In support of participation by American scholars in the <i>Aby Warburg at 150 – Work and Legacy</i> conference hosted by the Warburg Institute	6,000
Wellesley College WELLESLEY, MA	In support of educational programming for the exhibition <i>The Medici's Painter: Carlo Dolci and 17th-Century Florence</i> at the Davis Museum, Wellesley College, Wellesley, MA	12,000
Yale University NEW HAVEN, CT	In support of the sixth Summer Teachers Institute in Technical Art History (STITAH), held in partnership with the Conservation Center at the Institute of Fine Arts, New York University	90,200
Total—History of Art		\$986,855

CONSERVATION

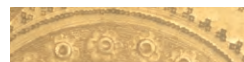


American Institute for Conservation of Historic & Artistic Works WASHINGTON, DC	In support of participation by speakers from abroad in the 2016 American Institute for Conservation Annual Meeting in Montreal, Canada	20,000
Burlington Magazine Foundation LONDON, UNITED KINGDOM	In support of <i>Burlington Magazine's</i> Conservation and Restoration Editorial Series and Book Project	15,000
National Gallery of Art WASHINGTON, DC	In continued support of the publication <i>Platinum and Palladium Photographs: Technical and Aesthetic History, Connoisseurship, and Preservation</i>	25,000
North Carolina Museum of Art RALEIGH, NC	In support of conservation expenses associated with the exhibition <i>Reunited: Francescuccio Ghissi's St. John Altarpiece</i>	15,000
University of Delaware NEWARK, DE	In support of participation by graduate students in the 2016 ANAGPIC Student Conference hosted by the Straus Center for Conservation and Technical Studies, Harvard University, Cambridge, MA	7,500
Total—Conservation		\$82,500

Simon Vouet (French, 1590–1649)
Saint Jerome and the Angel, c. 1622/1625
Samuel H. Kress Collection
National Gallery of Art, Washington, DC



DIGITAL RESOURCES FOR THE HISTORY OF ART



Association of Historians of Nineteenth-Century Art SOUTH ORANGE, NJ	In support of participation by American speakers in the symposium, <i>Publishing Art History Digitally</i> , at the Institute of Fine Arts, New York University and the subsequent workshop hosted at the College Art Association Annual Conference	5,000
Carnegie Museum of Art PITTSBURGH, PA	In support of Art Tracks, an initiative to develop an open-source software for structuring provenance data	55,000
City University of New York NEW YORK, NY	In continued support of the e-journal <i>Art History Pedagogy and Practice</i>	56,500
Cornell University ITHACA, NY	In support of the development of a standardized, online undergraduate foundational course in technical art history for adoption at colleges and universities	24,000
CyArk ORINDA, CA	In support of the development of an educational video utilizing virtual reality technology, focused on a European cultural heritage site	10,000
Duke University DURHAM, NC	In continued support of students using digital tools to engage in art historical research at Duke University's Wired! Laboratory	10,000
Harvard University CAMBRIDGE, MA	In support of the creation of an innovative online version of Bernard Berenson's <i>The Drawings of Florentine Painters</i>	35,000
J. Paul Getty Trust LOS ANGELES, CA	In continued support of the <i>Digital Cicognara Library</i> , an international initiative to make available online the entire library of Count Leopold Cicognara (1767–1834)	45,000

Long Island University BROOKVILLE, NY	In support of the digitization of the William Randolph Hearst Archive to be made available online in the Artstor digital library	25,000
National Gallery of Art WASHINGTON, DC	In support of the digitization of the sculpture collection at the National Gallery of Art	60,000
New York University NEW YORK, NY	In support of a research project to use infrared reflectography to examine Gian Lorenzo Bernini's presentation drawings	3,875
Princeton University PRINCETON, NJ	In support of a postdoctoral fellow in digital art history at the Index of Christian Art to assist in the development of a new taxonomic structure to enhance the accessibility of the database	60,000
Smarthistory NEW YORK, NY	In support of a redesign of Smarthistory.org	12,000
Smithsonian Institution WASHINGTON, DC	In support of the digitization of the archives of art historians Wilhelm Reinhold Valentiner (1880–1958) and William George Constable (1887–1976)	98,725
Tufts University MEDFORD, MA	In continued support of the <i>Digital Milliet: Greek & Roman Painting in the 21st Century</i> , a project to compile an online collection of ancient Greek and Roman texts about painting	25,000
University of California, Riverside RIVERSIDE, CA	In support of the automation of FACES (Faces, Art, and Computerized Evaluation Systems), a facial recognition software for educational and non-commercial use	50,000
University of California, Santa Cruz SANTA CRUZ, CA	In support of a prototype for <i>Virtual Studiolo</i> , a project intended to virtually reassemble the Renaissance art collection of Isabella d'Este (1474–1539)	11,165
University of Michigan ANN ARBOR, MI	In support of a project to create a set of open-access guidelines for describing arts and humanities visual resources in digital publications	10,000
University of Oregon EUGENE, OR	In continued support of the <i>Nova Forma Urbis Romae: Mapping the Fondo Rodolfo Lanciani Collection</i> online resource	26,950
University of Oxford OXFORD, UNITED KINGDOM	In support of the digitization and online catalogue of the Portrait Collection at the Bodleian Libraries	21,000

Visual Understanding in Education NEW YORK, NY	In support of the Visual Thinking Strategies website redevelopment and expansion, including the addition of image sets from regional art museums	17,500
Warburg Institute, University of London LONDON, UNITED KINGDOM	In support of the digitization of images with classical subject matter for the Warburg Iconographic Database	25,000
<i>Total—Digital Resources for the History of Art</i>		\$686,715



GENERAL PROGRAM SUPPORT

Association of Research Libraries WASHINGTON, DC	3,863
Foundation Center NEW YORK, NY	5,000
Philanthropy New York NEW YORK, NY	7,250
Philanthropy Roundtable WASHINGTON, DC	500
<i>Total — General Program Support</i>	<i>\$16,613</i>

Next Page:
Bernardo Strozzi
(Italian, 1581–1644)
Queen Berenice of Egypt, c. 1640
Samuel H. Kress Collection
El Paso Museum of Art, El Paso, TX



FELLOWSHIPS



SUMMARY OF FELLOWSHIPS

History of Art: Institutional Fellowships	\$ 944,485
Conservation Fellowships	582,100
Interpretive Fellowships at Art Museums	339,500
<i>Grand Total Fellowships</i>	<i>\$1,866,085</i>

HISTORY OF ART: INSTITUTIONAL FELLOWSHIPS



American Academy in Rome NEW YORK, NY	Kress Pre-Doctoral Research Fellowships awarded to Jenny Krieger (University of Michigan) “The Business of Commemoration: A Comparative Study of Italian Catacombs” John Landsdowne (Princeton University) “Image Made Flesh: The Micromosaic Man of Sorrows at Santa Croce in Gerusalemme in Rome” Nathan Dennis (Johns Hopkins University) “Performing Paradise in the Early Christian Baptistry: Art, Liturgy, and the Transformation of Vision” Michelle DiMarzo (Temple University) “Titian and the Culture of Mid-Century Rome: The Venetian Among the Ruins”	100,000
American School of Classical Studies at Athens PRINCETON, NJ	Kress Pre-Doctoral Research Fellowship awarded to Ross Brendle (Johns Hopkins University) “Function and Significance of Late Attic Black-Figure Vases”	25,485
American School of Classical Studies at Athens PRINCETON, NJ	Agora-Corinth Publication Fellowships awarded to Dr. Ann Blair Brownlee, Dr. Kathleen Warner Slane, Dr. Sarah James, and Dr. Lindsay Close Spencer	30,000
Association of Art Museum Directors Educational Foundation NEW YORK, NY	Kress Provenance Research Fellowship awarded to Dr. Robert Calhoun at the Columbus Museum of Art	40,000
Bibliotheca Hertziana ROME, ITALY	Kress Pre-Doctoral Institutional Fellowships awarded to Morgan Ng (Harvard University) “The Architecture of Statecraft, Stealth and Spectacle: Urban Fortifications in Sixteenth-Century Italy” Tiffany Racco (University of Delaware) “Luca Giordano: Speed, Imitation, and the Art of Fame”	65,000

Courtauld Institute of Art LONDON, UNITED KINGDOM	Kress Pre-Doctoral Institutional Fellowships awarded to Meg Bernstein (University of California, Los Angeles) "Civil Service: English Parochial Architecture, 1250–1300" Brigid Von Preussen (Columbia University) "The Antique Made New: Commercial Classicism in Late Georgian Britain" (Jointly hosted with the Warburg Institute, University of London)	65,000
Harvard University CAMBRIDGE, MA	Rush H. Kress Fellowship at the Harvard University Center for Italian Renaissance Studies, Villa I Tatti, Florence, Italy awarded to Dr. Luisa Capodiecì	55,000
Institut National d'Histoire de l'Art PARIS, FRANCE	Kress Pre-Doctoral Institutional Fellowships awarded to Nancy Thebaut (University of Chicago) " <i>Non est hic</i> : Figuring the Absent Christ in Early Medieval Art" Grace Chuang (Institute of Fine Arts, New York University) "Bernard II Vanrisamburgh, Master Cabinetmaker in Eighteenth-Century Paris"	65,000
Kunsthistorisches Institut, Florence FLORENCE, ITALY	Kress Pre-Doctoral Institutional Fellowships awarded to Rachel Boyd (Yale University) "From Experimentation to Specialization: The Della Robbia Workshop, ca. 1430–1550" Andrew Griebeler (University of California, Berkeley) "The Illustrated Greek Herbal and Its Reception"	65,000
Lu, Haohao	Kress Pre-Doctoral Institutional Fellowship at the Leiden University Centre for the Arts in Society awarded to Haohao Lu (Indiana University) "The Paradox of Desire: Image and Imagination of Eros at the Burgundian-Habsburg Court"	30,000
Museum of Modern Art NEW YORK, NY	Kress New York Art Resources Consortium (NYARC) Fellowship awarded to Megan Williams	42,000
National Gallery of Art WASHINGTON, DC	Samuel H. Kress Professorship in the History of Art at the Center for Advanced Study in the Visual Arts awarded to Iain Boyd Whyte, Kress Senior Research Fellowships in the History of Art awarded to Morten Steen Hansen and Mauro Mussolin, Kress Pre-Doctoral Fellowships in the History of Art awarded to Denva Jackson and Kelli Wood	230,000

Sterling & Francine Clark Art Institute WILLIAMSTOWN, MA	Kress Fellowship in the Literature of Art Before the Age of Art History awarded to Jeehee Hong (Syracuse University)	32,000
Universiteit Leiden LEIDEN, NETHERLANDS	Administrative honorarium for hosting two Kress Pre- Doctoral Institutional Fellows at the Leiden University Centre for the Arts in Society: Haohao Lu (Indiana University) and Elizabeth Mitchell (Harvard University)	5,000
Yale University NEW HAVEN, CT	Kress Fellowship in Art Librarianship awarded to Meredith Hale	30,000
Zentralinstitut für Kunstgeschichte MUNICH, GERMANY	Kress Pre-Doctoral Institutional Fellowships awarded to Shannon Steiner (Bryn Mawr College) “Byzantine Enamel and Material Power” Rachel Danford (Johns Hopkins University) “Manipulating Matter: Stucco Sculpture in the Early Middle Ages”	65,000
<i>Total—History of Art: Institutional Fellowships</i>		\$944,485



CONSERVATION FELLOWSHIPS

American Institute for Conservation of Historic & Artistic Works WASHINGTON, DC	Kress Conservation Publication Fellowship awarded to Gwen Spicer for the manuscript "Using Magnets in Conservation"	35,000
American Institute for Conservation of Historic & Artistic Works WASHINGTON, DC	Kress Conservation Fellowships awarded to Art Gallery of New South Wales (Kelly McCauley); Art Institute of Chicago (Kaslyne O'Connor); Conservation Center for Art and Historic Artifacts (Brooke Prestowitz); Guggenheim Museum (Brian Castriota, Alexandra Nichols); Indianapolis Museum of Art (Erica Schuler); Museum of Fine Arts, Boston (Catherine Mallinckrodt); Northeast Document Conservation Center (Amy Ying-ju Chen); Winterthur Museum, Garden & Library (Elizabeth Peirce)	300,000
Buffalo State College Foundation BUFFALO, NY	Fellowships for graduate level conservation internships awarded to Lisa A. Ackerman, Michiko Adachi, Janelle Batkin-Hall, Sophie Hunter, Nicole Passerotti, Nicole Peters, Maria Cristina Rivera Ramos, Christine Romano, Anne Schaffer, and Paige Schmidt	20,000
New York University NEW YORK, NY	In support of the conservation of paintings from the Kress Collection, undertaken by advanced graduate students at the Conservation Center of the Institute of Fine Arts, New York University, under the supervision of Dianne Dwyer Modestini and the Kress Post-Graduate Fellow Margarita Berg; and in support of summer graduate archaeological conservation field work	207,100
University of Delaware NEWARK, DE	Fellowships for graduate level conservation internships awarded to Gerrit Albertson, Alexa Beller, Leah Bright, Jessica Chasen, Julia M. Commander, Samantha Owens, and Josh Summer	20,000

Total—Conservation Fellowships **\$582,100**

INTERPRETIVE FELLOWSHIPS AT ART MUSEUMS



Art Institute of Chicago CHICAGO, IL	In continued support of the Teaching Institute in Museum Education (TIME), a series of summer professional development seminars for art museum educators to study the theory, history, and practical application of gallery teaching with leading practitioners	35,000
Cornell University Johnson Museum of Art ITHACA, NY	Kress Interpretive Fellowship awarded to Brittany Rubin	30,000
Detroit Institute of Arts DETROIT, MI	Kress Interpretive Fellowship awarded to Jehan Mullin	30,000
Fine Arts Museums of San Francisco SAN FRANCISCO, CA	Kress Interpretive Fellowship awarded to Jessica Stevenson Stewart	30,000
Frick Collection NEW YORK, NY	In continued support of the annual Kress Lecture on Art Museum Education	4,500
Frick Collection NEW YORK, NY	Kress Interpretive Fellowship awarded to Caitlin Henningsen	30,000
Honolulu Museum of Art HONOLULU, HI	Kress Interpretive Fellowship awarded to Christine Park	30,000
Museum of Fine Arts, Boston BOSTON, MA	Kress Interpretive Fellowship awarded to Dustin Aaron	30,000

Museum of Fine Arts, Houston HOUSTON, TX	Kress Interpretive Fellowship awarded to Claire Spadafora	30,000
Saint Louis Art Museum SAINT LOUIS, MO	Kress Interpretive Fellowship awarded to Lindsey Schiffko	30,000
Utah Museum of Fine Arts SALT LAKE CITY, UT	Kress Interpretive Fellowship awarded to Emily Izzo	30,000
Worcester Art Museum WORCESTER, MA	Kress Interpretive Fellowship awarded to Katherine Werwie	30,000
<i>Total—Interpretive Fellowships at Art Museums</i>		\$339,500

Next Page:
 Salvator Rosa
 (Neapolitan, 1615–1673)
Saint Peter, c. 1639
 Samuel H. Kress Collection
 Trinity College, Hartford, CT



**FINANCIAL
REVIEW**



INDEPENDENT AUDITOR'S REPORT

The Board of Trustees
Samuel H. Kress Foundation

We have audited the accompanying financial statements of the Samuel H. Kress Foundation (a nonprofit organization), which comprise the statements of financial position as of June 30, 2016 and 2015, and the related statements of activities and cash flows for the years then ended, and the related notes to the financial statements.

Management's Responsibility for the Financial Statements

Management is responsible for the preparation and fair presentation of these financial statements in accordance with accounting principles generally accepted in the United States of America; this includes the design, implementation, and maintenance of internal control relevant to the preparation and fair presentation of financial statements that are free from material misstatement, whether due to fraud or error.

Auditor's Responsibility

Our responsibility is to express an opinion on these financial statements based on our audit. We conducted our audit in accordance with auditing standards generally accepted in the United States of America. Those standards require that we plan and perform the audit to obtain reasonable assurance about whether the financial statements are free of material misstatement.

An audit involves performing procedures to obtain audit evidence about the amounts and disclosures in the financial statements. The procedures selected depend on the auditor's judgment, including the assessment of the risks of material misstatement of the financial statements, whether due to fraud or error. In making those risk assessments, the auditor considers internal control relevant to the entity's preparation and fair presentation of the financial statements in order to design audit procedures that are appropriate in the circumstances, but not for the purpose of expressing an opinion on the effectiveness of the entity's

internal control. Accordingly, we express no such opinion. An audit also includes evaluating the appropriateness of accounting policies used and the reasonableness of significant accounting estimates made by management, as well as evaluating the overall presentation of the financial statements.

We believe that the audit evidence we have obtained is sufficient and appropriate to provide a basis for our audit opinion.

Opinion

In our opinion, the financial statements referred to above present fairly, in all material respects, the financial position of the Samuel H. Kress Foundation as of June 30, 2016 and 2015, and the changes in its net assets and cash flows for the years then ended in accordance with accounting principles generally accepted in the United States of America.

Respectfully submitted,

A handwritten signature in cursive script that reads "Owen J. Flanagan + Co.".

October 12, 2016

STATEMENTS OF FINANCIAL POSITION

EXHIBIT A

Samuel H. Kress Foundation
June 30, 2016 and 2015

	2016	2015
Assets		
Investments	\$ 77,093,008	\$ 90,202,343
Operating cash	539,789	224,878
Accrued interest and dividends receivable	11,813	9,790
Prepaid expenses and other assets	47,684	31,085
Property and equipment, net of accumulated depreciation	1,139,362	1,256,026
Total Assets	\$ 78,831,656	\$ 91,724,122
Liabilities and Net Assets		
Liabilities		
Grants payable	\$ 4,937,113	\$ 6,646,696
Accounts payable and accrued expenses	118,263	135,716
Excise tax payable	—	56,279
Deferred Federal excise tax payable	7,328	186,284
Total Liabilities	5,062,704	7,024,975
Unrestricted Net Assets	73,768,952	84,699,147
Total Liabilities and Net Assets	\$ 78,831,656	\$ 91,724,122

See Accompanying Notes to Financial Statements.

STATEMENTS OF ACTIVITIES

EXHIBIT B

Samuel H. Kress Foundation
Years Ended June 30, 2016 and 2015

	2016	2015
Revenue		
Interest	\$ 509	\$ 159
Dividends	1,189,650	1,309,503
	1,190,159	1,309,662
Less direct investment expenses:		
Investment management and custodian fees	567,387	603,774
Federal excise taxes	19,505	147,962
	586,892	751,736
Net Investment Revenue	603,267	557,926
Contributions	33,500	—
Grants and Expenses		
Grants authorized	1,986,967	2,966,550
Foundation directed projects	19,986	20,000
Grants management and administrative	1,371,969	1,413,841
Total Grants and Expenses	3,378,922	4,400,391
Change in Net Assets before Gain (Loss) on Investments	(2,742,155)	(3,842,465)
Net Gain (Loss) on Investments (net of deferred Federal excise taxes)	(8,188,040)	2,126,398
CHANGE IN NET ASSETS FOR YEAR	(10,930,195)	(1,716,067)
Net Assets, beginning of year	84,699,147	86,415,214
NET ASSETS, END OF YEAR	\$ 73,768,952	\$ 84,699,147

See Accompanying Notes to Financial Statements.

STATEMENTS OF CASH FLOWS

EXHIBIT C

Samuel H. Kress Foundation
Years Ended June 30, 2016 and 2015

	2016	2015
Cash Flows Provided (Used)		
From operating activities:		
Change in Net Assets for Year	\$ (10,930,195)	\$ (1,716,067)
Adjustments to reconcile change in net assets to net cash used by operating activities:		
<i>Depreciation</i>	116,664	116,977
<i>Net realized gain on investments</i>	(580,831)	(7,003,487)
<i>Change in unrealized appreciation</i>	8,947,827	4,918,458
(Increase) decrease in assets:		
<i>Accrued interest and dividends receivable</i>	(2,023)	1,098
<i>Prepaid expenses and other assets</i>	(16,599)	11,537
Increase (decrease) in liabilities:		
<i>Grants payable</i>	(1,709,583)	(1,188,021)
<i>Accounts payable and accrued expenses</i>	(17,453)	24,914
<i>Excise tax payable</i>	(56,279)	39,962
<i>Deferred Federal excise tax</i>	(178,956)	(41,369)
Net Cash Used Operating Activities	(4,427,428)	(4,835,998)
From Investing Activities:		
Proceeds from sale of investments	20,546,649	44,626,335
Purchases of investments	(15,804,310)	(39,793,908)
Additions to property and equipment	—	(24,669)
Net Cash Provided by Investing Activities	4,742,339	4,807,758
Net increase (decrease) in cash for year	314,911	(28,240)
Cash, Beginning of Year	224,878	253,118
Cash, End of Year	\$ 539,789	\$ 224,878
Supplemental Disclosure:		
Cash paid for Federal Excise Tax	\$ 95,000	\$ 108,000

See Accompanying Notes to Financial Statements.

Samuel H. Kress Foundation
June 30, 2016

NOTE 1
Organization

The Samuel H. Kress Foundation ("the Foundation") was established on March 6, 1929 by Samuel H. Kress. The Foundation is incorporated in the State of New York for the purpose of promoting the moral, physical and mental well-being and progress of the human race, using or creating such means or agencies as from time to time the Trustees shall deem expedient to accomplish such purpose.

NOTE 2
Summary of Significant
Accounting Policies

The financial statements of the Foundation have been prepared on the accrual basis of accounting.

Operating Cash

For purposes of cash flows, cash consists of cash maintained in checking accounts.

Fair Value Measurements

The Foundation follows US GAAP (Generally Accepted Accounting Principles) guidance on Fair Value Measurements which defines fair value and establishes a fair value hierarchy organized into three levels based upon the input assumptions used in pricing assets. Level 1 inputs have the highest reliability and are related to assets with unadjusted quoted prices in active markets. Level 2 inputs relate to assets with other than quoted prices in active markets which may include quoted prices for similar assets or liabilities or other inputs which can be corroborated by observable market data. Level 3 inputs are unobservable inputs and are used to the extent that observable inputs do not exist.

During fiscal year 2016, the Foundation adopted new US GAAP guidance which removed the requirements to categorize within the fair value hierarchy alternative investments where fair value is measured using the Net Asset Value ("NAV") per share or its equivalent as a practical expedient. Adoption of the guidance was applied retrospectively and had no effect on the carrying value of such investments.

NOTE 2
(continued)

Investment Valuation and Investment Income Recognition

Investments are carried at fair value. The fair value of alternative investments has been estimated using the NAV as reported by the management of the respective alternative investment fund. US GAAP guidance provides for the use of the NAV as a “Practical Expedient” for estimating fair value of alternative investments. NAV reported by each alternative investment fund is used as a practical expedient to estimate the fair value of the Foundation’s interest. Purchases and sales of securities are recorded on a settlement date basis. Interest and dividend income is recorded when received. Realized and unrealized gains and losses are included in the statement of activities.

Investment Risks and Uncertainties

Alternative investments consist of non-traditional, not readily marketable investments, some of which may be structured as limited partnership, venture capital funds, hedge funds, private equity funds and common trust funds. The underlying investments of such funds, whether invested in stock or other securities, may not be currently traded in a public market and typically are subject to restrictions on resale. Values determined by investment managers and general partners of underlying securities that are thinly traded or not traded in active markets may be based on historical costs, appraisals, a review of the investees’ financial results, financial condition and prospects, together with comparisons to similar companies for which quoted market prices are available or other estimates that require varying degrees of judgment.

Because of the inherent uncertainty of valuations, the estimated fair values may differ significantly from the values that would have been used had a ready market for such investments existed or had such investments been liquidated, and those differences could be material.

Property and Equipment

Property and equipment are recorded at cost and are depreciated using the straight-line method over their estimated useful lives, building—35 years, building fixtures—5 to 15 years, office furniture and equipment—5 to 10 years.

Grants

The Foundation records grants as expenses and liabilities at the time each grant is authorized by the Trustees and the recipient has been notified or the program is announced to the public. Grants are payable to the grantee according to the terms established by the Trustees and may be subject to routine performance requirements by the grantee.

Use of Estimates

The preparation of financial statements in conformity with accounting

NOTE 2
(continued)

principles generally accepted in the United States of America requires management to make estimates and assumptions that affect the amounts reported in the financial statements. Actual results could differ from these estimates. The estimates are not material in the aggregate.

Subsequent Events

In connection with the preparation of the financial statements the Foundation evaluated subsequent events after the statement of financial position date of June 30, 2016 through October 12, 2016, which was the date the financial statements were available to be issued.

Comparative Financial Statements

Certain reclassifications have been made to the June 30, 2015 financial statement presentation to correspond to the current fiscal year's presentation. Net assets and changes in net assets are unchanged due to these reclassifications.

NOTE 3
Investments

A summary of investments is as follows:

	2016		2015	
	Cost	Fair Value	Cost	Fair Value
Short-term cash investments	\$ 3,365,829	\$ 3,365,829	\$ 2,891,941	\$ 2,891,941
Common stock				
Financials	3,716,009	3,710,946	3,717,595	4,127,967
Information technology	3,481,269	4,095,306	4,039,179	5,034,320
Healthcare	2,027,192	2,040,209	2,240,915	2,947,035
Consumer discretionary	1,665,722	1,545,121	2,390,072	2,616,955
Other	4,469,266	4,223,102	3,861,673	3,858,726
Small capital equity funds	2,131,560	2,522,324	1,905,573	2,708,445
Large capital equity funds	6,195,249	7,381,958	6,510,161	8,466,697
International equity funds	15,113,851	14,994,124	16,024,831	18,451,345
International bond funds	4,298,129	3,944,078	4,258,510	3,664,183
Fixed income funds	2,070,727	2,086,615	3,284,737	3,275,425
Emerging market funds	5,288,931	5,317,439	6,281,380	5,918,841
Hedge funds	11,923,385	12,004,705	12,500,000	14,377,418
Special situation funds	10,838,683	9,720,420	11,000,000	11,881,470
	76,585,802	76,952,176	80,906,567	90,220,768
Net receivable for pending trades	140,832	140,832	(18,425)	(18,425)
	\$76,726,634	\$ 77,093,008	\$ 80,888,142	\$ 90,202,343

NOTE 3
(continued)

The following are major categories of investments measured at estimated fair value as of June 30:

2016			
Description	Quoted prices in Active Markets for Identical Assets	Investments Valued Using	Total
	Level 1	NAV	
Short-term cash investments	\$ 3,506,661	\$ —	\$ 3,506,661
Common stock	15,614,684	—	15,614,684
Small capital equity funds	2,522,324	—	2,522,324
Large capital equity funds	7,381,958	—	7,381,958
International equity funds	—	14,994,124	14,994,124
International bond funds	—	3,944,078	3,944,078
Fixed income funds	2,086,615	—	2,086,615
Emerging market funds	2,550,379	2,767,060	5,317,439
Hedge funds	—	12,004,705	12,004,705
Special situation funds	—	9,720,420	9,720,420
	\$ 33,662,621	\$ 43,430,387	\$ 77,093,008

2015			
Description	Quoted prices in Active Markets for Identical Assets	Investments Valued Using	Total
	Level 1	NAV	
Short-term cash investments	\$ 2,873,516	\$ —	\$ 2,873,516
Common stock	18,585,003	—	18,585,003
Small capital equity funds	2,708,445	—	2,708,445
Large capital equity funds	8,466,697	—	8,466,697
International equity funds	—	18,451,345	18,451,345
International bond funds	—	3,664,183	3,664,183
Fixed income funds	3,275,425	—	3,275,425
Emerging market funds	5,918,841	—	5,918,841
Hedge funds	—	14,377,418	14,377,418
Special situation funds	—	11,881,470	11,881,470
	\$ 41,827,927	\$ 48,374,416	\$ 90,202,343

Information regarding the liquidity of alternative investments valued at the NAV per share or equivalent at June 30, 2016 is as follows:

	Fair Value	Unfunded Commitments	Redemption Frequency	Redemption Notice
International equity funds (a)	\$ 14,994,124	—	Monthly	10 days
International bond fund (b)	3,944,078	—	Monthly	10 days
Emerging Markets fund (c)	2,767,060	—	Monthly	30 days
Hedge funds (d)	8,230,631	—	Annually	45–90 days
Hedge funds (d)	3,774,074	—	Not Eligible	1–2 year lockup
Special situation funds (e)	7,096,826	—	Quarterly	90–180 days
Special situation funds (e)	<u>2,623,594</u>	—	Not Eligible	3 year lockup
	<u>\$ 43,430,387</u>			

(a) International equity funds consists of two investments which focus on long-term growth through investing in diversified portfolios of equity securities of companies outside the United States.

(b) International bond fund consists of one investment which focuses on achieving favorable returns from a globally diversified portfolio of debt or debt-like securities.

(c) Emerging markets fund consists of one fund focused on achieving long-term capital appreciation by investing in companies that are located in emerging market economies.

(d) Hedge funds consists of seven investments which all seek to preserve and grow capital through different combinations of long and short investments in different foreign and domestic equity sectors. One of these funds is not eligible for redemption until 2018.

(e) Special situations consists of three funds which seek to invest in undervalued companies that may be overlooked or misunderstood, in order to generate favorable, high returns. One of the funds is not eligible for redemption for 3 years.

NOTE 4
Net Gain (Loss)
on Investments

The following is a summary of the net gain (loss) on investments:

	2016	2015
Realized gains on sale of investments	\$ 580,831	\$ 7,003,487
Net change in unrealized appreciation	(8,947,827)	(4,918,458)
Deferred Federal excise tax	178,956	41,369
Net Gain (Loss) on Investments	\$(8,188,040)	\$ 2,126,398

NOTE 5
Property and
Equipment

Property and equipment consists of the following:

	2016	2015
Land	\$ 500,000	\$ 500,000
Building	2,804,558	2,804,558
Furniture, fixtures, and equipment	758,415	838,195
	4,062,973	4,142,753
Less: Accumulated depreciation	2,923,611	2,886,727
Net Property and Equipment	\$ 1,139,362	\$ 1,256,026

Depreciation expense for 2016 and 2015 was \$116,664 and \$116,977, respectively.

NOTE 6
Grants Payable

A reconciliation of grants payable is as follows:

	2016	2015
Grants payable, July 1	\$ 6,646,696	\$ 7,834,717
Grants approved	1,781,289	2,740,452
Grants paid, net of refunds of \$60,778 and \$40,693 in fiscal year 2016 and 2015, respectively	(3,696,550)	(4,154,275)
Change in discount to present value	205,678	225,802
Grants payable, June 30	\$ 4,937,113	\$ 6,646,696

The Foundation operates on a five year grant cycle. The majority of grants paid are on grant approvals made during fiscal year 2014. These grants will be paid through the year ended June 30, 2019.

NOTE 6
(continued)

Grants payable as of June 30, 2016 are discounted to present value using a 5% rate and are expected to be paid over the next three years as follows:

2017	\$ 2,171,635
2018	1,579,385
2019	1,390,585
	<hr/> 5,141,605
Discount	(204,492)
	<hr/> \$4,937,113 <hr/>

NOTE 7
Retirement Plan
and Commitments

The Foundation maintains a deferred annuity retirement plan under Section 403(b) of the Internal Revenue Code ("IRC") for all eligible employees. Under this plan, the Foundation contributes 10% of each employee's salary annually. The expense for the retirement plan for the years ended June 30, 2016 and 2015 totaled \$56,181 and \$55,285, respectively.

The Foundation has a separate retirement plan under Section 457(b) of the IRC, which limits participation in the plan to only management. The President contributes to this plan and there are no matching provisions.

NOTE 8
Taxes

The Foundation is exempt from Federal income taxes under Section 501(c)(3) of the Internal Revenue Code and has been classified as a "private foundation." The Foundation is subject to an excise tax on net investment income at either a 1% or 2% rate depending on the amount of qualifying distributions. For 2016 and 2015 the Foundation's rate was 2%, respectively.

Deferred Federal excise tax on unrealized appreciation of investments is provided at the 2% tax rate since the qualification for the 1% tax rate is not determinable until the year in which gains are realized.

Deferred Federal excise tax recovery of \$178,956 and \$41,369 has been recorded for fiscal years ending June 30, 2016 and 2015, respectively.

NOTE 9
Concentration of Risk

During the years ended June 30, 2016 and 2015, the Foundation had cash in banks exceeding federally insured limits. The Foundation manages this risk by using only large, established financial institutions.



TRUSTEES AND STAFF

Kress Board of Trustees

Frederick W. Beinecke, *Chairman*

David Rumsey, *Secretary and Treasurer*

Elizabeth Eveillard

Carmela V. Franklin

William J. Higgins

Cheryl Hurley

Robert Loper

Theodore V.H. Mayer

Barbara A. Shailor

Daniel H. Weiss

Kress Staff

Max Marmor, *President*

L. W. Schermerhorn, *Deputy Director*

Wyman Meers, *Program Administrator*

Kelly Risi, *Accountant / Controller*

Chelsea Cates, *Administrative Assistant*

Counsel

Hughes Hubbard & Reed

Independent Accountants

Owen J. Flanagan & Co.

TRUSTEES AND TERMS OF SERVICE



Samuel H. Kress	1929–1955	Philip D. Reed	1959–1965
Claude W. Kress	1929–1940	Andrew J. Sordoni, Jr.	1963–1967
Rush H. Kress	1929–1963	Norman Cousins	1965–1980
Nicholas F. Lenssen	1929–1944	Lyman Field	1968–1999
Paul B. Scarff	1929–1940	W. Clarke Wescoe	1969–1995
Stephen S. Pichetto	1936–1946	William Atwood	1971–1980
Claude P. La Shelle	1936–1942	Mary M. Davis	1972–1981
John A. Hopper	1936–1951	John C. Fontaine	1975–2006
Joseph H. Abraham	1936–1949	Marilyn Perry	1981–2007
Albert L. Clothier	1940–1953	Edwin J. Weisl, Jr.	1983–1984
William H. Lollar	1942–1945	William B. Bader	1986–1999
Ormand N. Birkland	1942–1944	Inmaculada von Habsburg-Lothringen	1986–2008
Henry S. Bowers	1944–1955	Daniel N. Belin	1992–2006
John M. Hancock	1944–1951	Victoria Newhouse	1994–1999
Guy Emerson	1946–1953	Frederick W. Beinecke	1997–
Arnaud C. Marts	1946–1951	Walter L. Weisman	1997–2008
Andrew J. Sordoni	1949–1963	Cheryl Hurley	1999–2015
Harold H. Helm	1951–1958	Barbara A. Shailor	2002–
G. Keith Funston	1951–1958	David Rumsey	2004–
Paul Troast	1951–1958	William J. Higgins	2006–
Alexander C. Campbell	1953–1971	Daniel H. Weiss	2009–
Franklin D. Murphy	1953–1994	Carmela V. Franklin	2009–
Frank M. Folsom	1955–1970	Elizabeth Eveillard	2011–
Charles L. Abry	1955–1959	Robert Loper	2013–
Herbert L. Spencer	1958–1960	Theodore V.H. Mayer	2015–
Alfred E. Driscoll	1958–1975		

Guido Cagnacci (Bolognese, 1601–1663)
David Holding Goliath's Head, 1650
Samuel H. Kress Collection
Columbia Museum of Art, Columbia, SC





The Samuel H. Kress Foundation was established on March 6th, 1929. The Foundation's mission is to sustain and carry out the original vision of our founder, Samuel H. Kress (1863–1955). We support the work of individuals and institutions engaged with the appreciation, interpretation, preservation, study and teaching of the history of European art and architecture from antiquity to the dawn of the modern era.

Samuel H. Kress Foundation

174 East 80th Street
New York, NY 10075
212.861.4993 tel
www.kressfoundation.org

Tanzio da Varallo
(Piedmontese, c. 1575–1633)
Saint Sebastian, c. 1620/1630
Samuel H. Kress Collection
National Gallery of Art, Washington, DC







Samuel H. Kress Foundation
www.kressfoundation.org